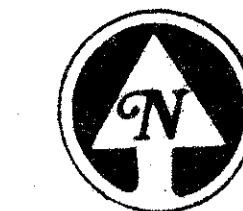


A PLANNED UNIT DEVELOPMENT LUCERNE LAKES HOMES, VILLAGE I, 6th ADDITION

BEING A REPLAT OF A PORTION OF BLOCK
29 OF PALM BEACH FARMS COMPANY, PLAT NO. 3,
PLAT BOOK 2, PAGES 45 THRU 54, PUBLIC
RECORDS, PALM BEACH COUNTY, FLORIDA,
LYING IN SECTION 28, TWP. 44S., RGE. 42E.,
PALM BEACH COUNTY, FLORIDA.

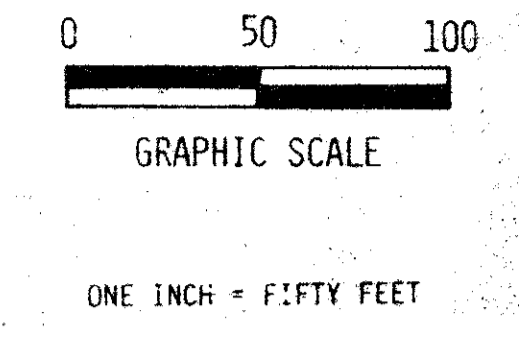


77

STATE OF FLORIDA
COUNTY OF PALM BEACH

THIS PLAT WAS FILED FOR
RECORD AT
THIS 11 TH DAY OF
AUGUST, 1977 AND DULY RE-
CORDED IN PLAT BOOK
ON PAGES 77 AND 78

JOHN B. DUNKLE, CLERK
CIRCUIT COURT
BY: _____ DC

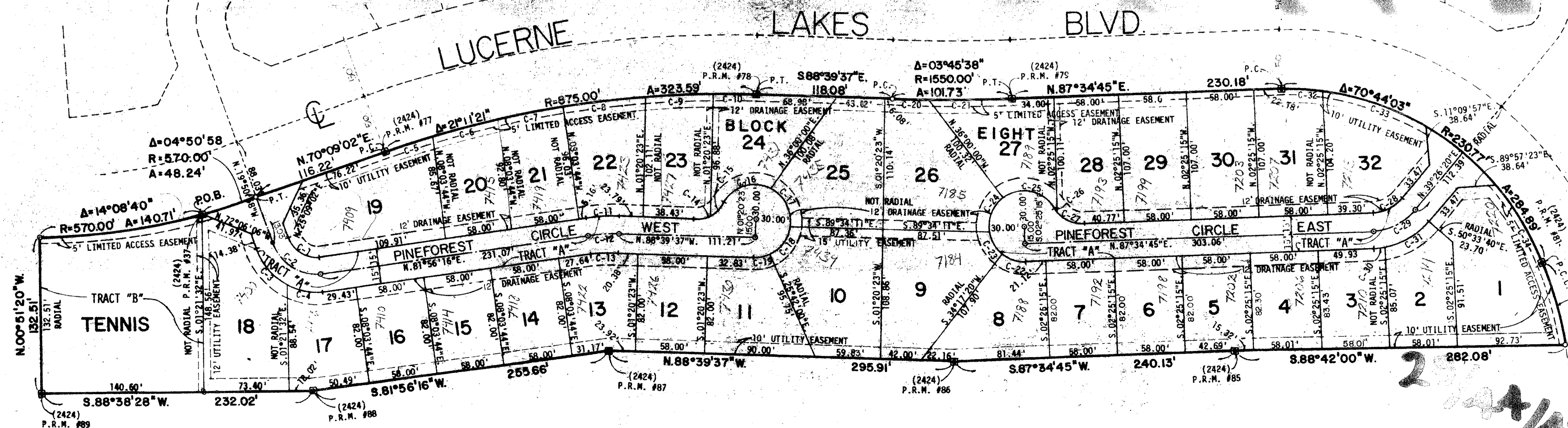


LOT SUMMARY

LOT 1 =	10,149 S.F.	or 0.23 AC.
LOT 2 =	5,501 S.F.	or 0.13 AC.
LOT 3 =	4,873 S.F.	or 0.11 AC.
LOT 4 =	4,806 S.F.	or 0.11 AC.
LOT 5 =	4,758 S.F.	or 0.11 AC.
LOT 6 =	4,756 S.F.	or 0.11 AC.
LOT 7 =	4,756 S.F.	or 0.11 AC.
LOT 8 =	6,103 S.F.	or 0.14 AC.
LOT 9 =	8,214 S.F.	or 0.19 AC.
LOT 10 =	9,074 S.F.	or 0.21 AC.
LOT 11 =	5,681 S.F.	or 0.13 AC.
LOT 12 =	4,756 S.F.	or 0.11 AC.
LOT 13 =	5,068 S.F.	or 0.12 AC.
LOT 14 =	4,756 S.F.	or 0.11 AC.
LOT 15 =	4,756 S.F.	or 0.11 AC.
LOT 16 =	4,756 S.F.	or 0.11 AC.
LOT 17 =	5,292 S.F.	or 0.12 AC.
LOT 18 =	9,124 S.F.	or 0.21 AC.
LOT 19 =	9,478 S.F.	or 0.22 AC.
LOT 20 =	5,194 S.F.	or 0.12 AC.
LOT 21 =	5,495 S.F.	or 0.13 AC.
LOT 22 =	6,143 S.F.	or 0.14 AC.
LOT 23 =	6,007 S.F.	or 0.14 AC.
LOT 24 =	6,119 S.F.	or 0.14 AC.
LOT 25 =	8,460 S.F.	or 0.19 AC.
LOT 26 =	8,143 S.F.	or 0.19 AC.
LOT 27 =	6,244 S.F.	or 0.14 AC.
LOT 28 =	6,169 S.F.	or 0.14 AC.
LOT 29 =	6,206 S.F.	or 0.14 AC.
LOT 30 =	6,206 S.F.	or 0.14 AC.
LOT 31 =	6,173 S.F.	or 0.14 AC.
LOT 32 =	7,257 S.F.	or 0.17 AC.

CURVE DATA

C NO	CENT. ANG.	RADIUS	ARC	CHORD	TANGENT
C-1	78°12'46"	25.00	34.13	31.54	20.32'
C-2	78°12'46"	40.00	54.60	50.46	32.52'
C-3	46°51'21"	55.00	44.98	43.74	23.83'
C-4	31°21'25"	55.00	30.10	29.73	15.44'
C-5	02°52'02"	875.00	43.79	43.78	21.90'
C-6	03°49'38"	875.00	58.45	58.44	29.23'
C-7	03°48'16"	875.00	58.10	58.09	29.06'
C-8	04°37'38"	875.00	70.66	70.65	35.35'
C-9	03°48'31"	875.00	58.16	58.15	29.09'
C-10	02°15'17"	875.00	34.43	34.43	17.22'
C-11	09°24'07"	155.00	25.44	25.41	12.75'
C-12	09°24'07"	140.00	22.97	22.95	11.51'
C-13	09°24'07"	125.00	20.51	20.49	10.28'
C-14	51°30'29"	25.00	22.48	21.73	12.06'
C-15	11°27'23"	25.00	5.00	4.99	2.51'
C-16	97°37'28"	30.00	51.12	45.15	34.28'
C-17	64°01'27"	30.00	33.52	31.81	18.76'
C-18	54°16'33"	30.00	28.42	27.37	15.38'
C-19	27°02'23"	30.00	14.16	14.03	7.23'
C-20	01°10'42"	1550.00	31.87	31.87	15.94'
C-21	02°34'56"	1550.00	69.86	69.85	34.94'
C-22	36°42'35"	30.00	19.22	18.89	9.95'
C-23	46°32'50"	30.00	24.37	23.71	12.90'
C-24	63°09'56"	30.00	33.07	31.42	18.44'
C-25	96°32'37"	30.00	58.55	44.78	33.64'
C-26	19°23'03"	30.00	8.46	8.42	4.89'
C-27	43°34'48"	30.00	19.02	18.56	9.49'
C-28	48°08'25"	30.00	29.41	28.55	15.63'
C-29	48°08'25"	30.00	42.01	40.79	22.34'
C-30	07°07'40"	55.00	8.99	8.08	4.05'
C-31	41°30'44"	55.00	48.53	45.54	24.31'
C-32	08°55'44"	230.77	35.93	35.93	18.02'
C-33	21°43'17"	230.77	230.77	86.96	44.27'
C-34	17°39'54"	230.77	230.77	77.97	35.86'



0277-307

75
77

PALM BEACH FARMS COMPANY
PLAT NO. 3, Pp. 45-54

LUCERNE LAKES I - 6077

BENCH MARK
land surveying and mapping, inc.

THIS INSTRUMENT WAS PREPARED BY ROBERT J. WHIDDEN IN THE OFFICES OF BENCH MARK LAND SURVEYING AND MAPPING, INC., 2300 PALM BEACH LAKES BLVD., SUITE 209, WEST PALM BEACH, FL 33409, PHONE 688-2111.

DRAWN WJK	DATE 11/4/77	SHEET 2
DESIGNED RJW	SCALE 1"=50'	DRAWING NO. 2400